

19 St. Austell Road, Whalley Range, Manchester, M16 8WQ



JP&Brimelow
ESTATE AGENTS



5 2 3 C

*****VIDEO TOUR AVAILABLE***** An impressive & well-presented FIVE BEDROOM bay fronted semi-detached property, located off Wilbraham Road in Whalley Range. This property has seen extensive refurbishment throughout, with charm and character seen in the details.

Positioned on a highly regarded residential and tree lined road, off Kingsbrook Road. The property is perfectly located for schools, parks and Whalley Range Tennis Club. Fantastic transport links give you direct access to motorways, cycle routes, the city centre and the Metrolink station nearby on St Werburghs Road in Chorlton. Alexandra Park, St Bede's College & William Hulme Grammar School are all on your door step.

The well-planned accommodation comprises; a porch, an entrance/reception hallway with stained and leaded glazing, a beautiful lounge with a bay window to the front aspect with double doors leading into the dining room, a modern fitted kitchen leading to a utility area, a fitted three-piece bathroom suite and a double bedroom complete the ground floor.

Whilst to the first floor, there is a landing leading to four double bedrooms, and a modern four-piece family bathroom.

The property benefits from a large gated driveway, providing secure off-road parking, high ceilings, has both a front lawned garden and an enclosed rear garden with a detached garage and is warmed by a combi boiler providing gas central heating.

A substantial family home presented in immaculate condition throughout. Will suit a growing family and the sought after location is one not to miss.

£600,000





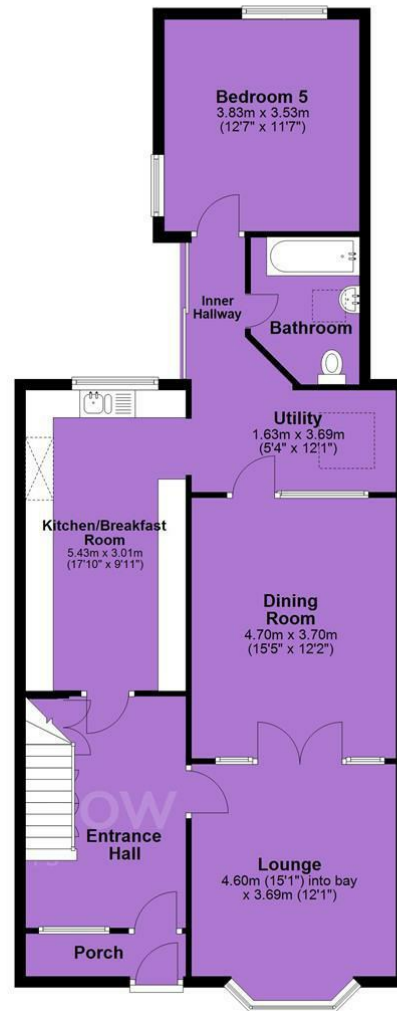
EPC Chart

Energy Efficiency Rating		
	Current	Potential
Very energy efficient - lower running costs		
(92 plus) A		
(81-91) B		
(69-80) C	73	81
(55-68) D		
(39-54) E		
(21-38) F		
(1-20) G		
Not energy efficient - higher running costs		
England & Wales		EU Directive 2002/91/EC



Tenure: Freehold Council Tax Band: D

Ground Floor



First Floor



JP & Brimelow Estate Agents Ltd
430 Barlow Moor Road, Manchester, M21 8AD

Tel: 0161 8822233

E: sales@jpbrimelow.co.uk www.jpandbrimelow.co.uk



JP & Brimelow
ESTATE AGENTS

NOTICE: JP & Brimelow Estate Agents Ltd for themselves and for the vendors or lessors of this property whose agents they are give notice that:

- (i) the particulars are set out as a general outline only for the guidance of intending purchasers or lessees, and do not constitute, nor constitute part of, an offer or contract;
- (ii) all descriptions, dimensions, references to the condition and necessary permissions for use and occupation, and other details are given in good faith and are believed to be correct but any intending purchasers or tenants should not rely on them as statements or representations of fact but must satisfy themselves by inspection or otherwise as to the correctness of each of them;
- (iii) no person in the employment of JP & Brimelow Estate Agents Ltd has any authority to make or give any representation or warranty whatever in relation to this property.

jpandbrimelowestateagents

@jpandbrimelow

